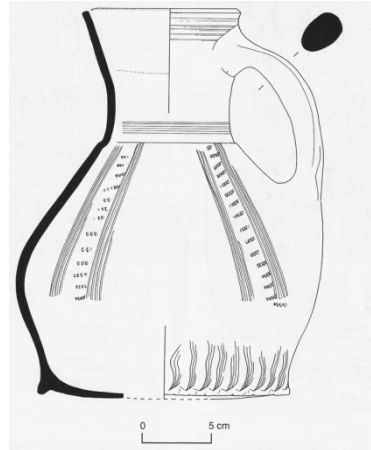


ROTTINGDEAN WHITEWAY CENTRE & SUSSEX SCHOOL OF ARCHAEOLOGY
ARCHAEOLOGICAL ILLUSTRATION: POTTERY
STUDY DAY

Saturday 27th January 2018, 10am-4pm.

Tutor: Jane Russell B.A., M.A. (former Senior Illustrator at Archaeology South-East)



The day will cover basic pottery drawing in pencil, using traditional archaeological conventions. These drawings can be used for later inking up by pen or drawing through a computer programme (neither inking up nor computer programmes are covered in the course). The day will start with an introductory tutorial, followed by students experimenting with their own drawings. We will draw whole and decorated pots, and sherds. The course is suitable for all abilities, whether beginners or those with some experience who wish to brush up on their skills.

Equipment for the course

Please do not buy any expensive drawing equipment as the tutor will provide the basic drawing equipment, but if you do have any of the following please bring them along:

- A3 Drawing board with metric graph paper on it
- 2H pencils, rubber, ruler, callipers, dividers, masking tape
- Cheap A4 copy paper to draw on
- Any pottery that you wish to draw that is no larger than an A4 sheet

Refreshments and Lunch

Tea, coffee and biscuits provided through the day. You are welcome to bring your own packed lunch or to obtain lunch at one of the many nearby village pubs or cafes.

Venue: Rottingdean Whiteway Centre, Whiteway Lane, Rottingdean, BN2 7HB

Fee: £25. To book please email MikeGregory@rwc.org.uk or phone 07913 753 493.

www.rwc.org.uk; www.sussexarchaeology.org