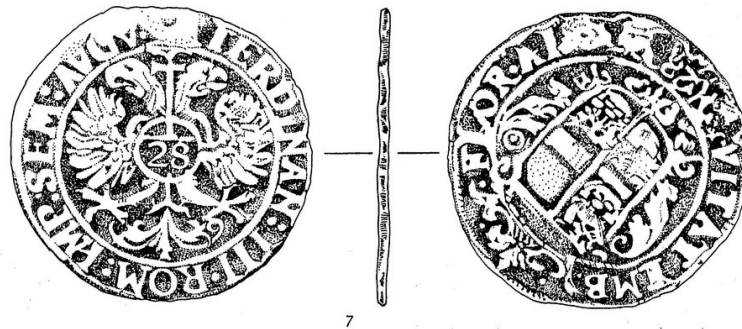


ROTTINGDEAN WHITEWAY CENTRE & SUSSEX SCHOOL OF ARCHAEOLOGY

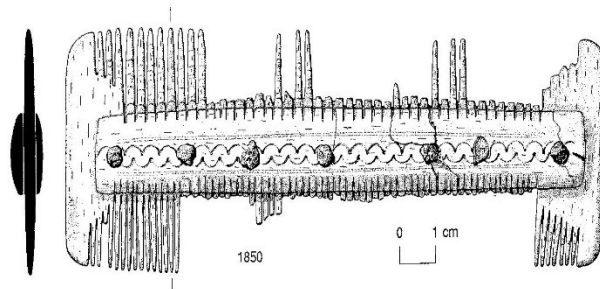
ARCHAEOLOGICAL ILLUSTRATION: METALWORK AND ORGANIC MATERIAL STUDY DAY

Saturday, 12th May 2018, 10am-4pm

Tutor: Jane Russell B.A., M.A. (former Senior Illustrator at Archaeology South-East)



The morning will cover basic metalwork drawing in pencil, using traditional archaeological conventions. These drawings can be used for later inking up by pen or drawing through a computer programme (neither inking up, nor computer programmes are covered in the course). The course will start with an introductory tutorial, followed by students experimenting with their own drawings. The afternoon will cover the illustration of organic material, such as wood and bone artefacts. The course is suitable for all abilities, whether beginners or those with some experience who wish to brush up on their skills.



Equipment for the course

Please do not buy any expensive drawing equipment, as the tutor will provide the basic drawing equipment, but if you do have any of the following please bring them along:

A3 Drawing board with metric graph paper on it, 2H pencils, rubber, ruler, callipers, dividers, masking tape, cheap A4 copy paper to draw on.

The tutor will provide artefacts for the class, but if you have any wood or bone artefacts that you would like to draw, please bring them along.

Refreshments and Lunch

Tea, coffee and biscuits provided through the day. You are welcome to bring your own packed lunch or to obtain lunch at one of the many nearby village pubs or cafes.

Venue: Rottingdean Whiteway Centre, Whiteway Lane, Rottingdean, BN2 7HB

Fee: £25. To book, please email MikeGregory@rwc.org.uk or phone 07913 753 493

www.rwc.org.uk; www.sussexarchaeology.org